

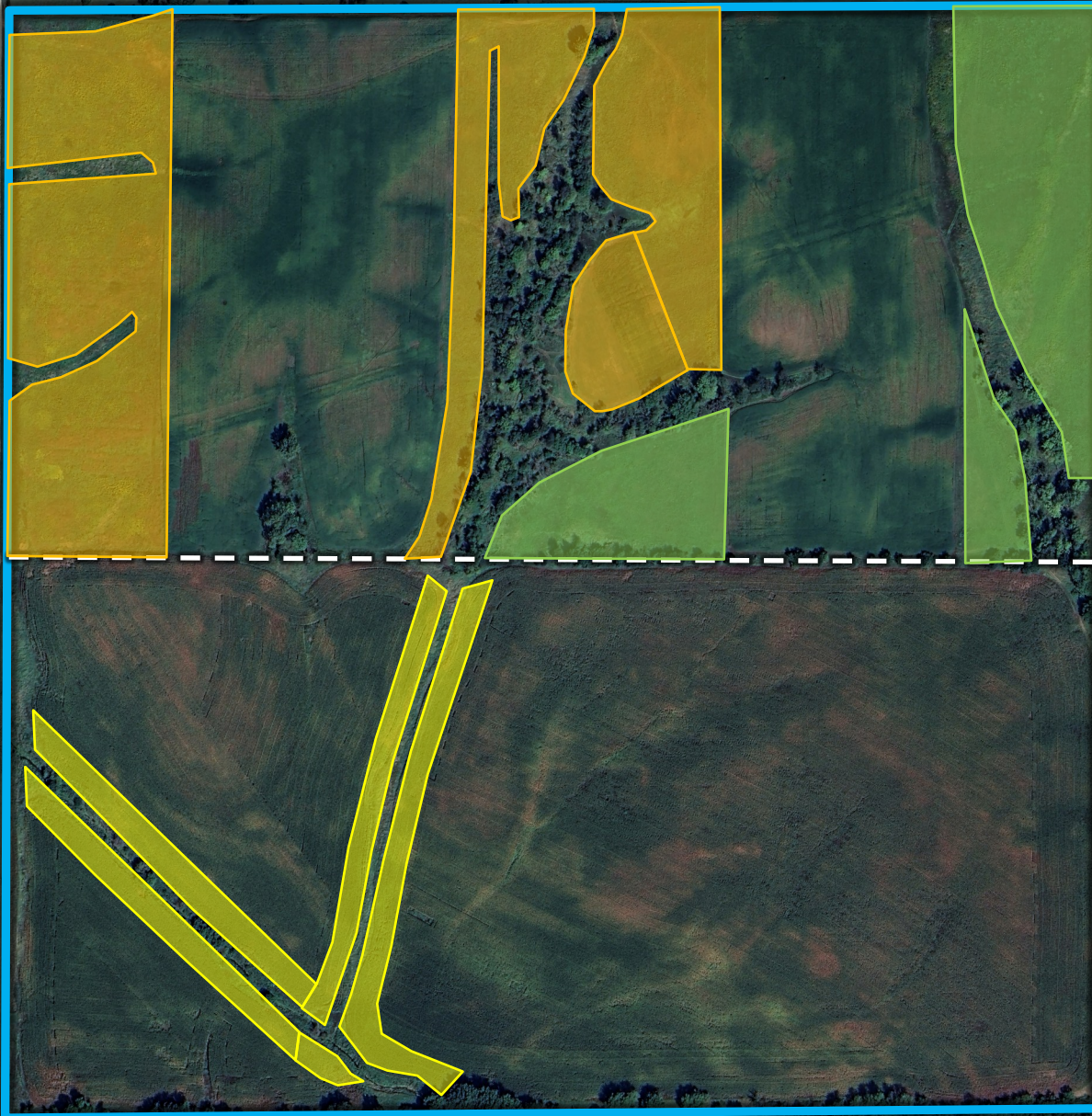


CP1 Contract thru 2032 - 10.78 Acres, \$1,817 Annually (\$168.51/Acre)



CP38-2/12 Contract thru 2037 - 20.92 Acres, \$3,653 Annually (\$174.61/Acre)

105TH STREET



CP21/22 Contract thru 2039 - 9.37 Acres, \$2,811 Annually (\$300/Acre)

\*All lines are approximate.